

# Loading & Inspection Report

**Product:** Face Masks

**Date:** July 21, 2020

**Quantity:** 1 x 40HQ



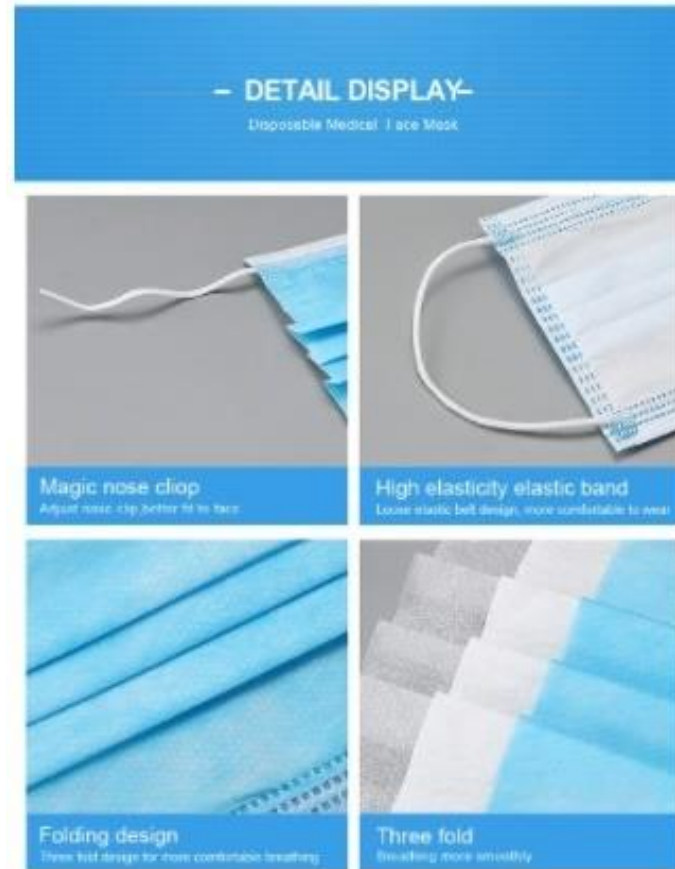
# Loading & Inspection Report

**Factory:** Jiangsu Xinni Textile Co., Ltd



# Loading & Inspection Report

## Goods Pictures:



# Loading & Inspection Report

## Goods Pictures:

PRODUCT DATA SHEET		
Product Name: Disposable Face Mask (Non-Medical)		
	<b>PACKING</b>	
	CARTON MEASUREMENT	EA POLYBAG (PCS) 50
		EA BOX (PCS) 50
		QTY/CTN (PCS) 2000
	53x42x35CM	N.W./PER CARTON 0.9KG
	G.W./PER CARTON 0.9KG	
<b>FEATURES</b>		
COLOR: Blue		
MATERIAL: Non-woven fabric 68%, Mel- blown fabric 32%		
GRADE: BFE99		
STANDARD: GB/T 32610-2016		
BRAND NAME: Placode		
<b>INSTRUCTIONS</b>		
APPLICATION SCENARIO: Pollen Prevention, prevent saliva droplets, dust-proof, anti-pollution		
STORAGE AND TRANSPORT CONDITIONS: The product must be kept at temperature between 15°C to 25°C and humidity less than 80%. Once opened, the content must be used for a continuous period of less than 9 hours.		
CONDITION OF USE: Consumption without price.		
<b>DISPOSAL INSTRUCTIONS:</b> Disposal methods are suggested in landfills and incineration as alternatives to eliminate the contaminated product. Behavior of the material after disposal in sanitary landfills is linked to the biodegradability potential of the suit and of the contaminants that it has acquired.		
<b>INSTRUCTION FOR USE:</b> 1. Confirm positive and negative first. 2. Apply the mask to your nose and mouth and pinch nose bridge to conform to your nose. 3. Place the ear-loop around both of your ears. 4. Mould the nose bridge piece tightly to secure facial fit.		
<b>ATTENTION</b>		
1. Before use, see information by manufacture. 2. Before use, check the package is intact, confirm the Mfg. Date and Exp. Date and use it within the Exp. Date. 3. Stop using immediately if breathing becomes difficult or dizziness or other distress occurs. 4. This product should be used as soon as possible after opening, and the recommended usage time for one mask is no more than 4 hours. 5. This product is for one-time use. 6. Those who are allergic to non-woven fabric, polyester or spandex should not use this product.		

Blocking droplets  
BFE >99%

# Loading & Inspection Report

## Goods Pictures:



# Loading & Inspection Report

## Official Inspection Report:

GB/T 32610-2016



### 检验检测报告 TEST REPORT



国家服饰及布艺产品质量监督检验中心(江苏)  
National Apparel and Cloth Apparel Quality Supervision and Inspection Center(Jiangsu)  
江苏省纺织产品质量监督检验研究院  
Jiangsu Textiles Quality Services Inspection Testing Institute



### 江苏省纺织产品质量监督检验研究院 检验报告



共 2 页 第 1 页

产品名称	一次性口罩	型号规格	—
委托单位	江阴市新美服饰有限公司	商 标	—
地 址	江阴市祝琴镇私弄工业园环西路	检验类别	委托送件
生产单位	—	样品等级	IV—
地 址	—	到样日期	2020-04-01
抽样地点	—	检验日期	2020-04-01~2020-04-03
检验数量	20只	分包情况	—
抽样基数	—/—	样品状态	符合检验要求
批号或货号或款号	—	生产日期	—
检验/判定依据	GB/T 32610-2016《日常防护型口罩技术规范》		
检验结论	见检测数据。		
备注	批准:  编制:  签发日期: 2020年04月01日 		

1. 请认真“查验检测报告”，请详细核对签字、盖章日期、地址、请不弄虚作假。  
2. 请妥善保管好“查验检测报告”，请妥善保管好“查验报告”。  
3. 如发生异议，请联系以上负责人或服务热线，以便及时处理。  
4. 如有疑问请咨询，请拨打服务热线 0510-83777777 或 400-888-8888。

# Loading & Inspection Report

## Goods Loading:



By John Meng